

VisTablet MUSE Manual

VisTablet Systems, LLC.

1435 Koll Circle Suite 108

San Jose, Ca, 95112

T : (408) 392-9230

TF : (888) 392-9230

F : (408) 392-9210

CustomerService@VisTablet.net

Original PDF file for this Manual is on our website. Please visit our Website www.vistablet.net and downloading this file is available now.



Index

1. Before using your VisTablet -----	Page#3
2. How to install Pen Pad with MacroKey Manager (for PC) -----	Page# 3
3. How to uninstall Pen Pad with MacroKey Manager (for PC) -----	Page#4
4. How to install Pen Pad with MacroKey Manager (for MAC) -----	Page#5
5. How to uninstall Pen Pad with MacroKey Manager (for MAC) -----	Page#6
6. How to install Free Notes (for PC) -----	Page#7
6.1. Installing Free Notes Manually -----	Page#7
7. How to uninstall Free Notes (for PC) -----	Page#10
8. How to change setting for MacroKey Manager (for PC) -----	Page#10
9. How to change setting for Pen Pad (for MAC) -----	Page#12
10. How to use MacroKey Manager (for PC) -----	Page#14
11. How to delete a profile (for PC and MAC) -----	Page#16
12. How to delete MacroKey Programed Shortcuts (for PC and MAC) -----	Page#17
13. How to set up shortcuts of Function Keys (for MAC) -----	Page#17
14. How to use the touch pad w/the Mode buttons -----	Page#19

1. Before using your VisTablet

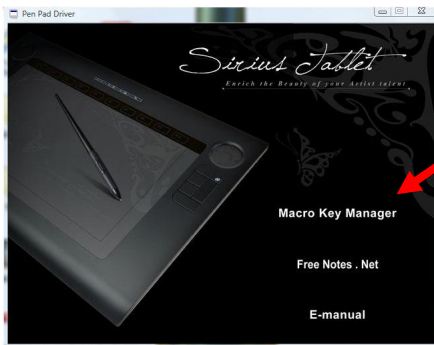
You should completely uninstall any other tablets' driver.

Always install the driver first before plugging your VisTablet into the USB.

(*Attention:* On MAC / Window 2000 / ME / XP / Vista / Window7, you should install the driver first before using your VisTablet.)

2. How to install Pen Pad with MacroKey Manager (for PC)

1. Insert Driver CD or double click "setup.exe" on your CD drive
2. Click "Macro Key Manager"



3. After clicking on the Macro Key Manager, InstallShield Wizard should pop-up. Follow the instructions and continue.
4. After finishing the installation, the driver will prompt you whether to restart your computer or not. Click "Yes" to restart your computer.
5. After restarting your computer, plug your VisTablet into your computer USB port.

(*Attention:* Most problems reported by our customers with VisTablet are originated from incorrect installation.

Most of these problems can be solved by uninstalling the VisTablet driver completely, and then, reinstalling it properly.

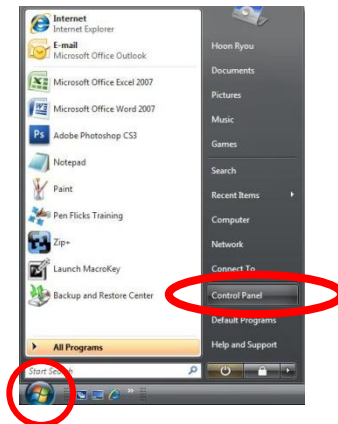
If you cannot fix the problem by uninstall and reinstall the driver, please contact us @ our website

www.vistablet.net or by email customersupport@vistablet.net or by call Toll Free Phone (888) 392-9230

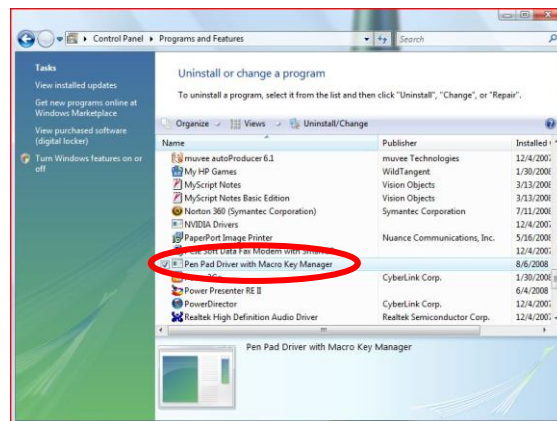
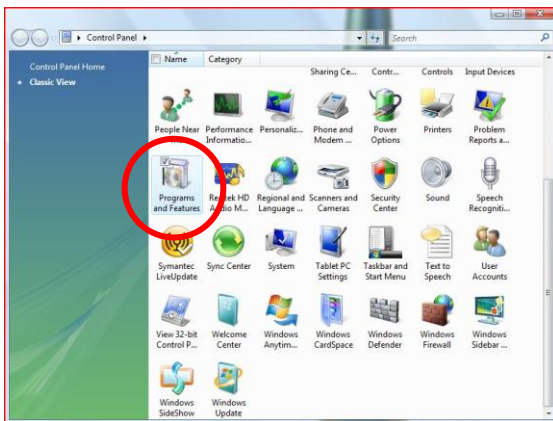
or (408) 392-9230.

3. How to uninstall Pen Pad with MacroKey Manager (for PC)

Start Menu → Control Panel → Add/ Remove Programs (XP/2000/ME)
 → Programs and Features (Vista)



→ Double click “Pen Pad Driver with MacroKey Manager” → Uninstall the Driver as followed by
 Instruction on your pop up window → Restart your computer



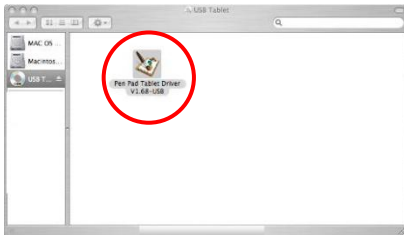
(*Attention:* If you reinstall the driver without restarting your computer, some errors may occur again.)

4. How to install Pen Pad with MacroKey Manager (for MAC)

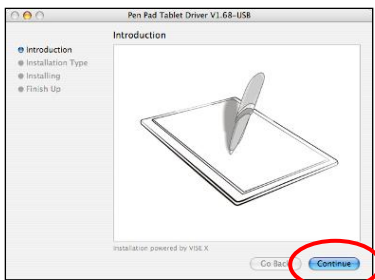
(*Attention:* Always install the driver first before you plug VisTablet into your MAC.)

(*Attention:* Check your driver to confirm that you have most current version. If not, go to www.vistablet.net and download the latest driver.) You can also call our Toll Free # (888) 392-9230 to receive the new driver.

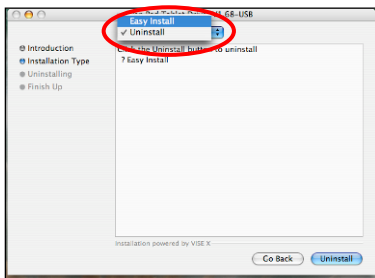
1. Insert Driver CD and Click the Pen Pad Tablet Driver Icon.



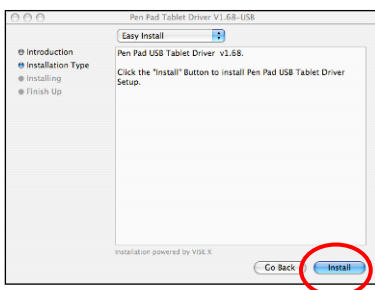
2. Click "Continue" on pop up window of Pen Pad Tablet Driver.



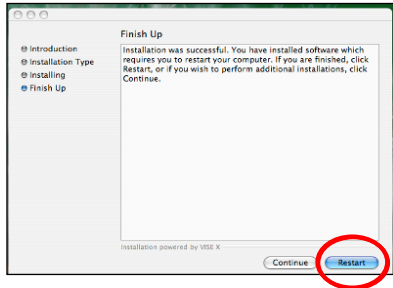
3. Make sure that you choose "Easy Install" located on top of the pop up window of Pen Pad Tablet Driver.



4. Click "Install".

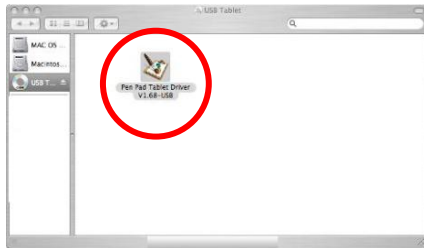


- Follow the instruction of Pen Pad Tablet Driver.
- Restart your MAC.

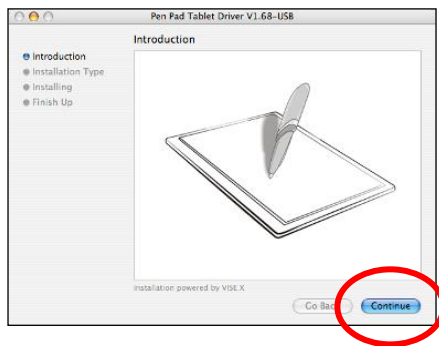


5. How to uninstall Pen Pad with MacroKey Manager (for MAC)

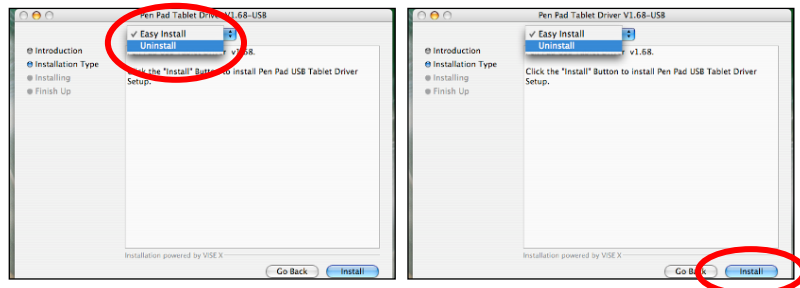
- Insert Driver CD and Click the Pen Pad Tablet Driver Icon.



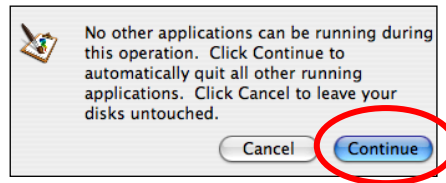
- Click "continue".



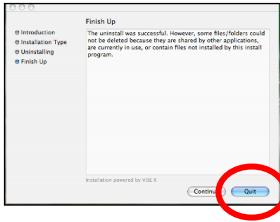
- Change the option from "Easy Install" to "Uninstall" on top of the pop up window of Pen Pad Tablet Driver, and then, click "Uninstall" Icon.



- Click "Continue" to process.



- Click "Quit" and always restart your MAC.

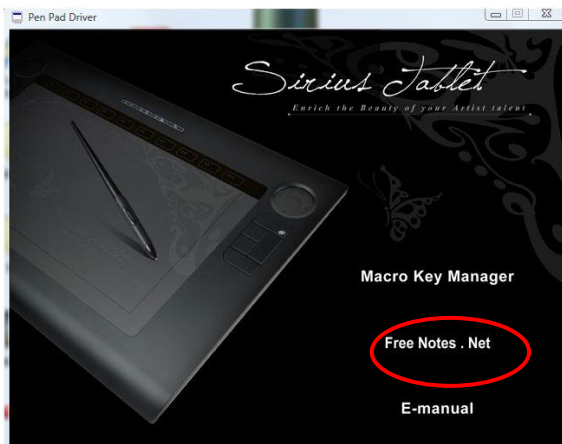


(*Attention:* When you already to reinstall the driver, you always restart your MAC before reinstalling the driver.)

6.How to install Free Notes (for PC)

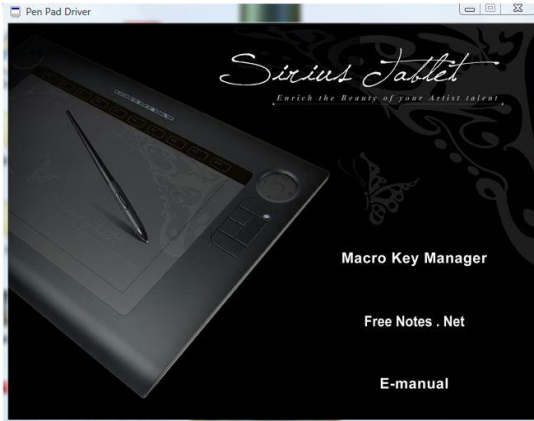
Free notes works with Windows XP, 2000 and Vista only.

On Window XP and 2000, when you insert Driver CD in your computer at start up, you can find each installation "Icon" on pop up window of Pen Pad Tablet Driver like picture below.



6.1.Installing Free Notes Manually

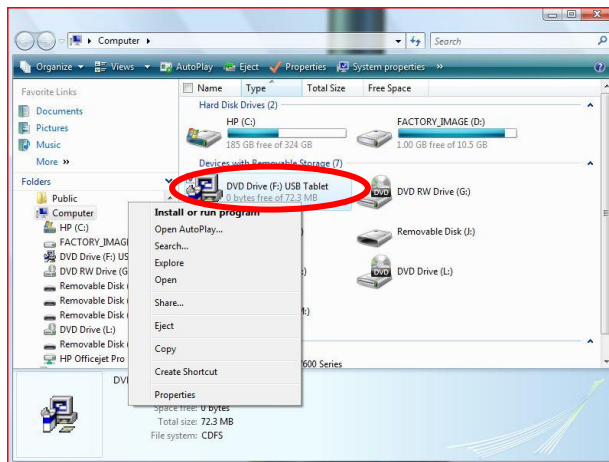
- Insert the driver CD.
- Close the pop up window of Pen Pad Tablet Driver.



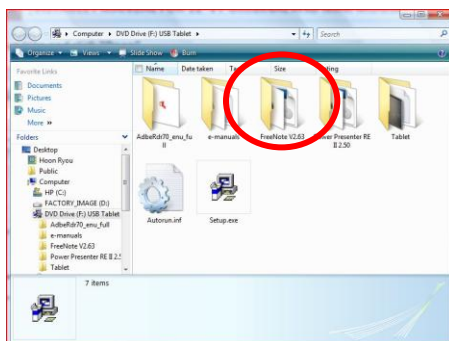
3. Double click "Computer" icon on your desktop screen.



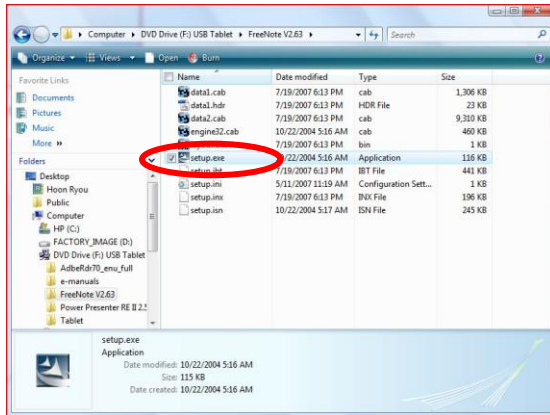
4. Right click on your CD drive icon and click "Open"



5. Double click "Free Notes" folder.



6. Double click "Setup.exe" file.



7. Follow the instruction on the pop up window of Pen Pad Tablet Driver.

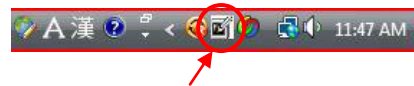
7.How to uninstall Free Notes (for PC)

Start Menu → Control Panel → Programs and Features (Vista) or Add/Remove Programs (XP)

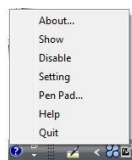
→ Double Click Free Notes & Office Ink

8.How to change setting for MacroKey Manager (for PC)

After the VisTablet driver is installed, you can change numbers of setting for MacroKey Manager by using the Icon on the Tray placed on bottom of Window Bar.



If you press the button located in the bottom of pen up, the Menu like the picture below is appeared.



About

Showing MacroKey Manager version, Driver version and Firmware version

Show

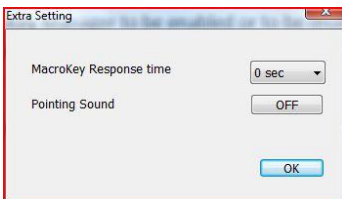
It shows Macrokey setup pop up window.

Disable

You can turn all Macrokey Manager options off without quitting Macrokey Manager program.

Setting

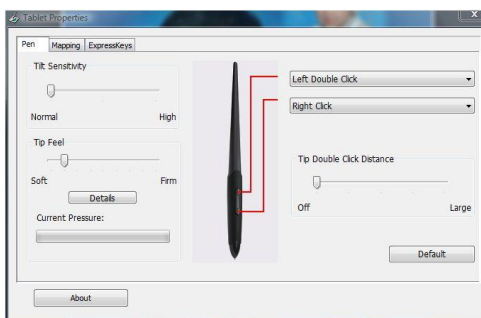
MacroKey Response Time



You can set timer for how long MacroKey function will work. There are 5 different choices; 0, 0.5, 1, 2 and 3 seconds. The timing you choose will determine how long you must hold pen on MacroKey before it activates. You can choose to get the pointing sound or not while the pen tip is pointing on the VisTablet.

Pen Pad

1. Buttons for Pen Setting



Button 1 and 2 : You can customize the buttons to your preference; to be double click or context menu.

Tilt Sensitivity : This is where you may customize how far you may tilt the pen so that it will still be recognized by the tablet. We suggest you move the slider to “High”.

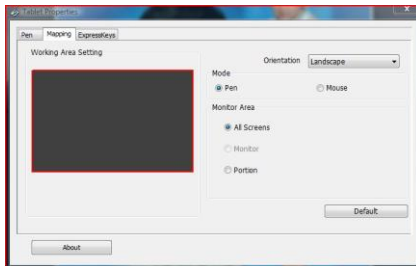
Tilt Feel : This is where you may customize how sensitive you would like for your tip to be. We suggest you move the slider to “Soft”.

Tip Double Click Distance: This slider determines how large the distance between double clicks is. We suggest to keep it at the default setting.

- Tapping or clicking your pen tip directly on tablet surface is always same response as clicking left mouse button.

Default Button: This button is to reset all sliders and settings to the “Default” setting.

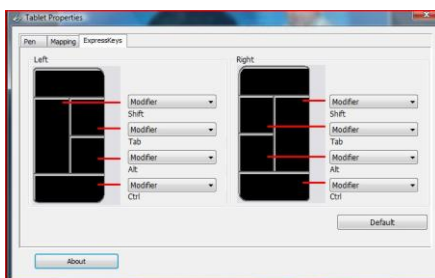
3. [Mapping](#)



This feature allows you to ‘map’ your tablet to your monitor(s). You may allow the tablet to fit the size of your monitor by clicking “Full Area” or to a particular monitor, and you may also map it to a portion of your monitor.

There are 2 modes that are available for your Muse: Pen Mode or Mouse Mode. Pen Mode is recommended for drawing applications, and Mouse Mode is good for navigating on your computer.

4. [ExpressKeys](#)



This menu is to configure the 10 “ExpressKeys” on both sides of the Muse tablet.

[Quit](#)

You can quit Macrokey Manager totally.

9.How to change setting for PenPad (for MAC)

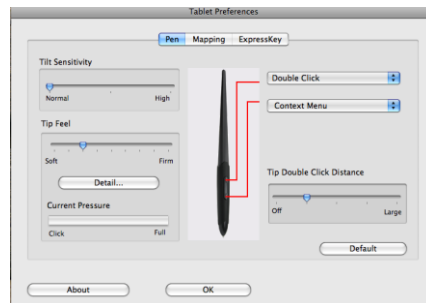
Click the Pen Pad icon on Dock tray.



1. **About :** this is a diagnostic tool for your Muse tablet. This where you can get information such as the Driver Version, and pressure and tilt sensitivity.



2. **Buttons for Pen Setting**



Button 1 and 2 : You can customize the buttons to your preference; to be double click or context menu.

Tilt Sensitivity : This is where you may customize how far you may tilt the pen so that it will still be recognized by the tablet. We suggest you move the slider to “High”.

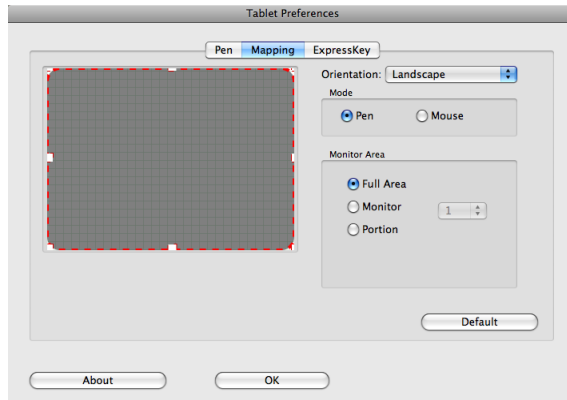
Tip Feel : This is where you may customize how sensitive you would like for your tip to be. We suggest you move the slider to “Soft”.

Tip Double Click Distance: This slider determines how large the distance between double clicks is. We suggest to keep it at the default setting.

- Tapping or clicking your pen tip directly on tablet surface is always same response as clicking left mouse button.

Default Button: This button is to reset all sliders and settings to the “Default” setting.

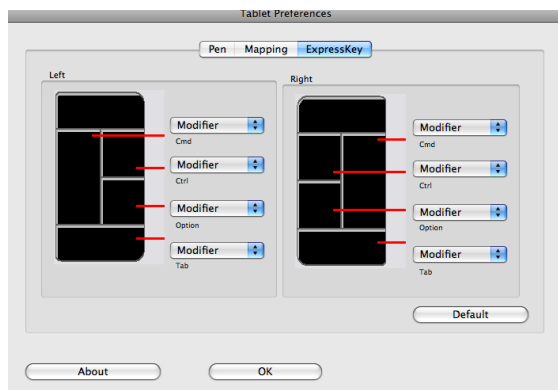
3. [Mapping](#)



This feature allows you to ‘map’ your tablet to your monitor(s). You may allow the tablet to fit the size of your monitor by clicking “Full Area”, or to a particular monitor, and you may also map it to a portion of your monitor.

There are 2 modes that are available for your Muse: Pen Mode or Mouse Mode. Pen Mode is recommended for drawing applications, and Mouse Mode is good for navigating on your computer.

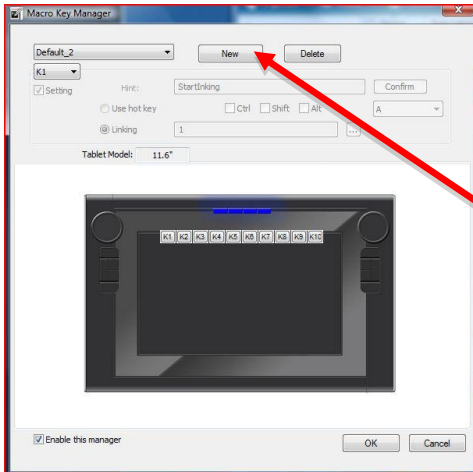
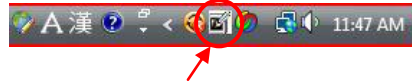
4. [ExpressKeys](#)



This menu is to configure the 10 “ExpressKeys” on both sides of the Muse tablet.

10. How to use the MacroKey Manager (for PC)

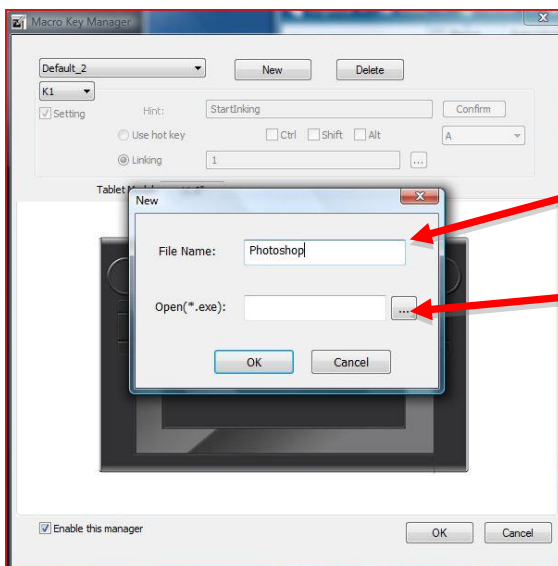
1. Right click the "Icon" on tray and choose "Show".



-This is the MacroKey Manager.

-Click "New" to create a new profile.

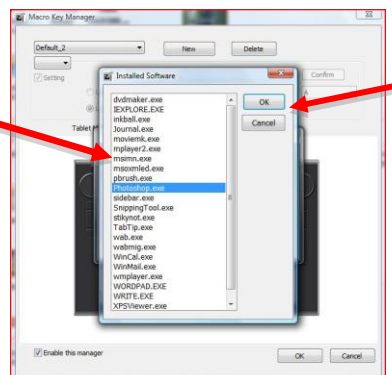
You can set up any shortcut on your computer or any software application which has "Executable File".



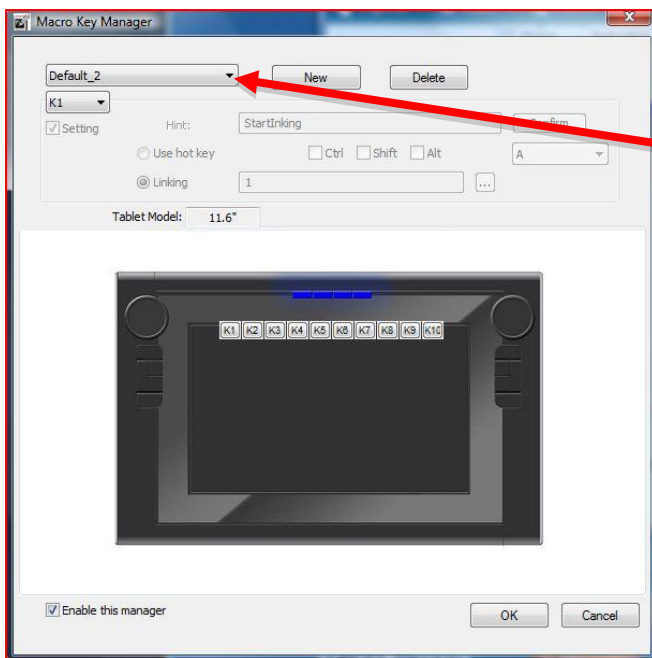
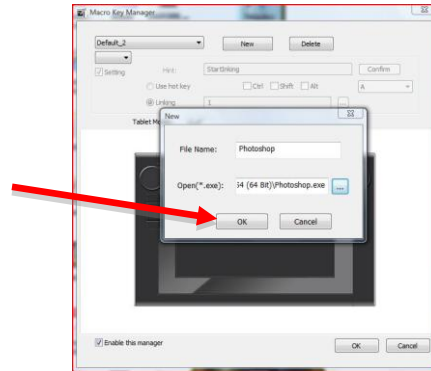
As an example, now we are going to demonstrate set up of shortcuts with "Adobe Photoshop" using MacroKey Manager.

-Enter "Photoshop" in the field "File Name"

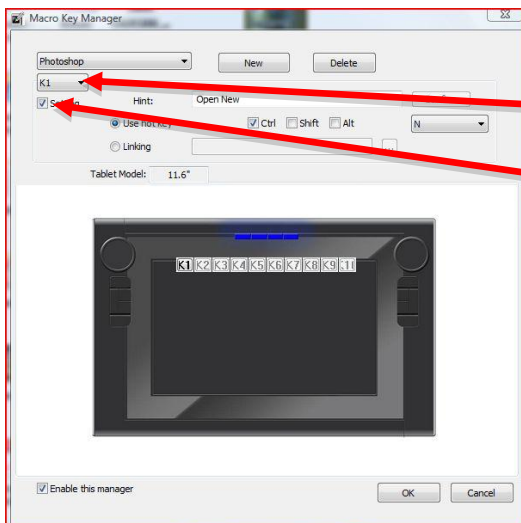
-Next click the "..." to locate the Photoshop executable file.



-Then click "OK"



From the drop down menu, select Photoshop.

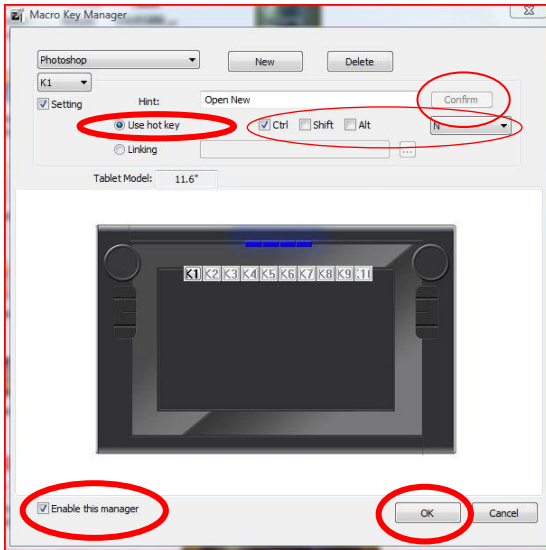


For this example, we will program K1 on the Muse to open a new canvas.

-From the drop down menu, select "K1"

-Next check the "Setting" box

-Next enter a "hint", this is what will pop up when you are in Photoshop, and you hover over K1. Enter "Open New" in the hint field



In Photoshop, to get a new canvas, the keyboard shortcut is Ctrl + N.

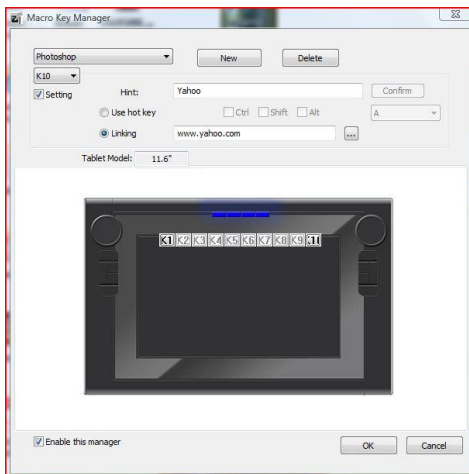
-Check the “Use hot key” box

-Next check the “Ctrl” box

-From the dropdown menu choose “N”

-Lastly, click “Confirm”

-Also make sure the box is checked for “Enable this manager”



You may also link a website or another application to any of the HotKeys.

-For this example we will program K10 to link to “Yahoo.com”

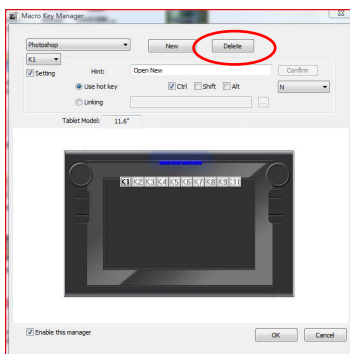
-Check the setting box, and then enter the hint “Yahoo”

- Check the Linking bubble, and enter “www.yahoo.com” in the field next to it

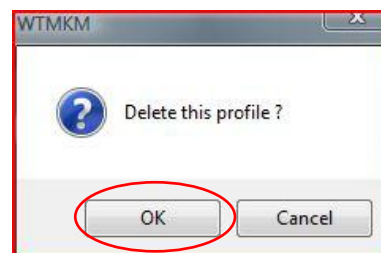
-Next click “confirm” to finalize

Now you will be able to go to Yahoo.com directly from Photoshop while you work!

11.How to delete a Profile (for PC and MAC)

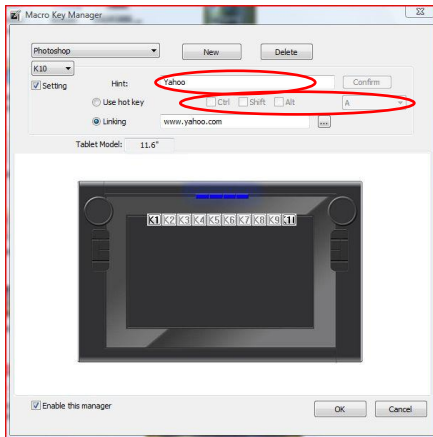


Click “Delete” Icon

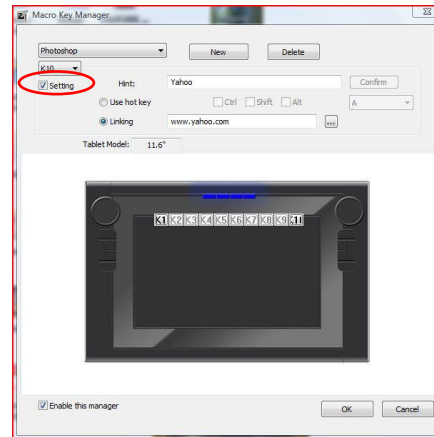


Click “OK”

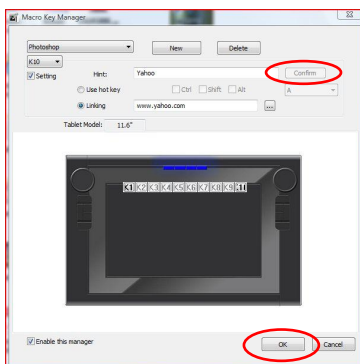
12. How to delete MacroKey Programed Shortcuts (for PC and MAC)



Erase the profile in "Hint" section
and unmark "Ctrl", "Shift" and "Alt"

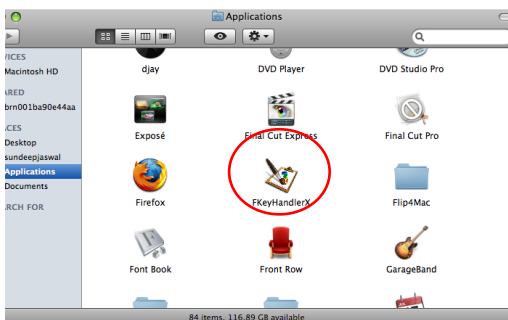


Unmark "Setting"

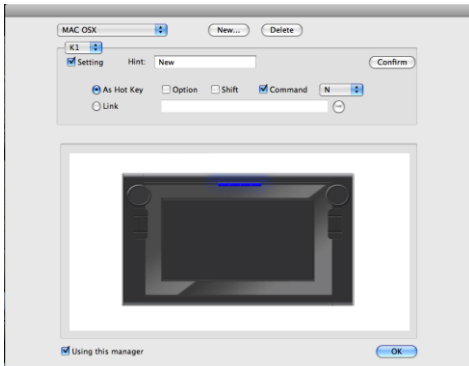


Click "Confirm" Icon, and then click "OK" button

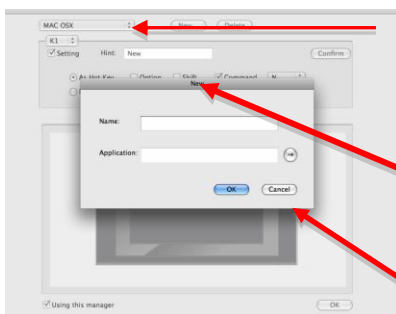
13. How to set up shortcuts of Function Keys (for MAC)



Locate FKeyHandlerX in your Applications folder.



Once you open FKeyHandlerX, this window will pop up. Using this KeyHandler you will be able to customize the 10 "Hot Keys" on the Muse.

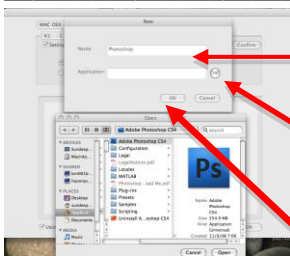


There are two default profiles in the drop don menu: OSX, and Finder.

To add more profiles, click the new button

When you click "New" this

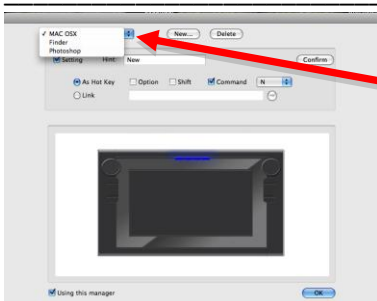
window will pop up.



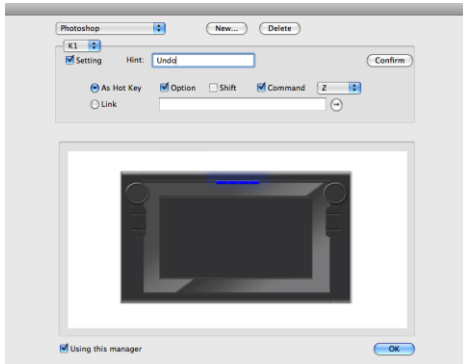
-In the name field enter the new profile that you would like to create, for this example we will use Photoshop.

-In the Application field, click on the arrow, and locate Photoshop.

-Click open, and OK to confirm the new profile.



-Click on the dropdown menu, and locate Photoshop so that you may start to customize the HotKeys for Photoshop on your Muse.



-For this example we will program K1 to Undo in Photoshop.

-In the Drop down menu, select K1, and check the setting box.

-Next check the “As Hot Key” bubble.

-Undo in Photoshop is Command + Option + Z, so check the “Option” and “Command” box. Next go to the dropdown menu and click “Z”.

-Next click the “Confirm” button, now your HotKey is active, and will work in Photoshop to Undo any procedure.

14. How To Use The Touch Pad w/The Mode Buttons



-There are four different mode buttons @ the top of the Muse and have two functions per button.

-Button 1 used in conjunction with the touch pad in mode one allows you to scroll up and down and side to side in mode two while pressing button four.

-Button 2 used in conjunction with the touch pad allows you to zoom in and out in mode one, and mode two with button 4 allows you to turn the volume up and down.

-Button 3 used in conjunction with the touch pad allows you to move in all four directions, and when pressing button 4, you may go Page Up/Page Down/Home/End.